



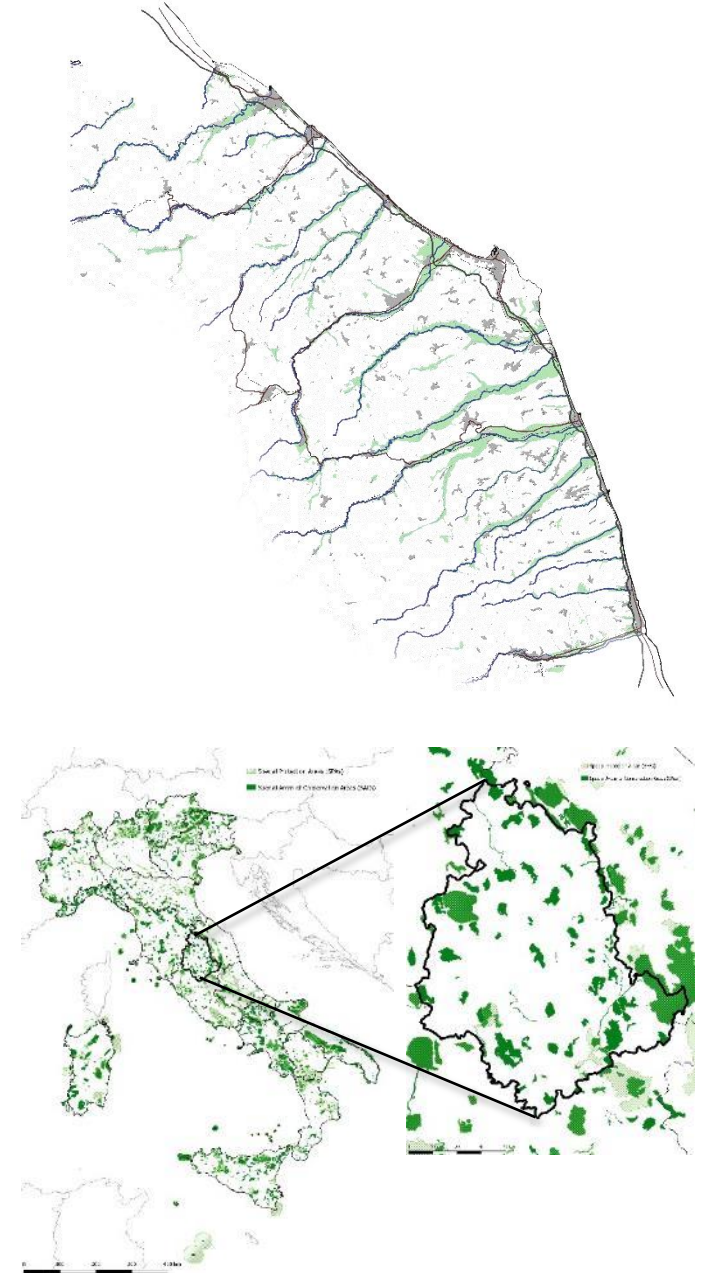
Relationship between protected areas and urban areas in Central Italy

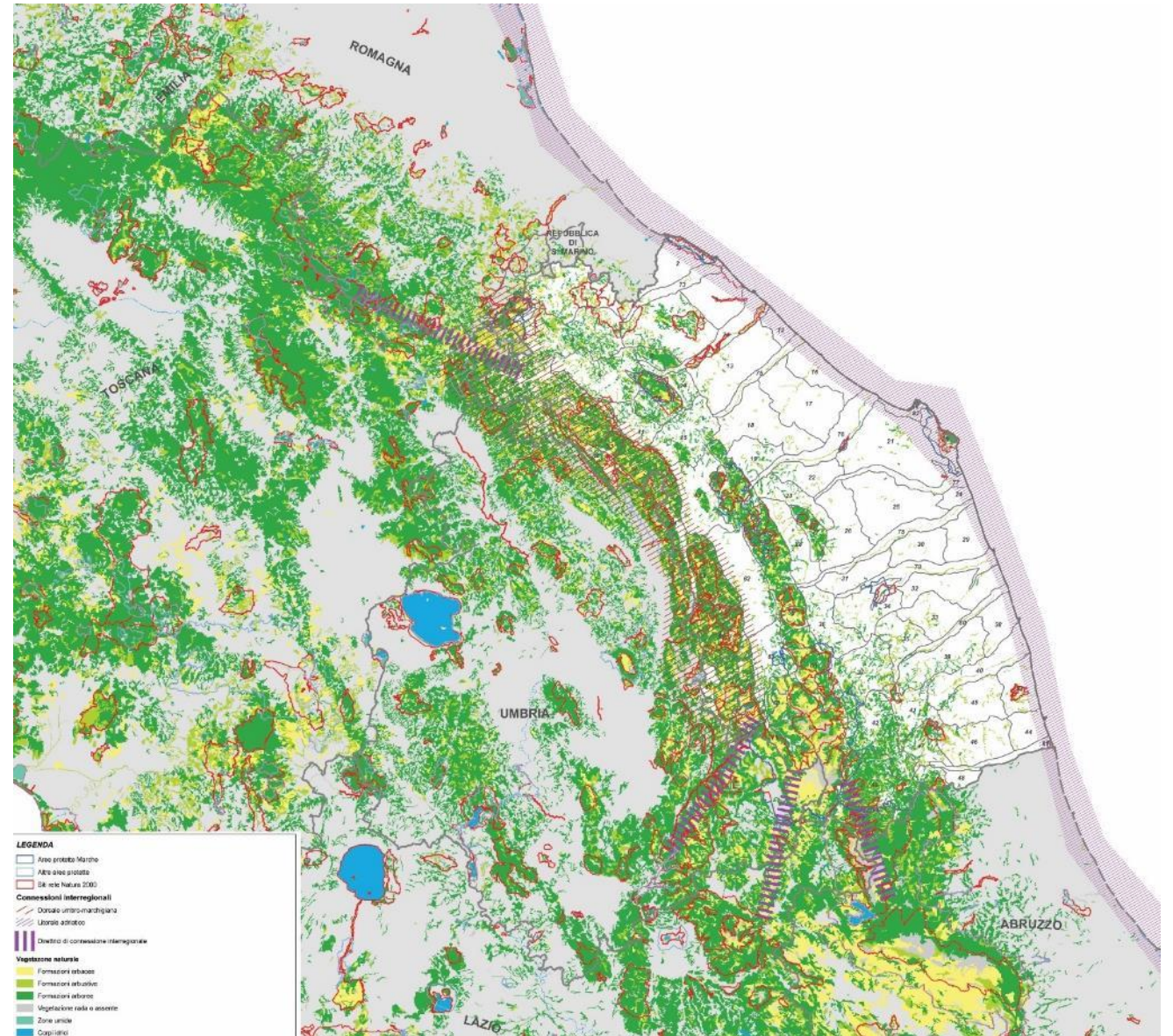
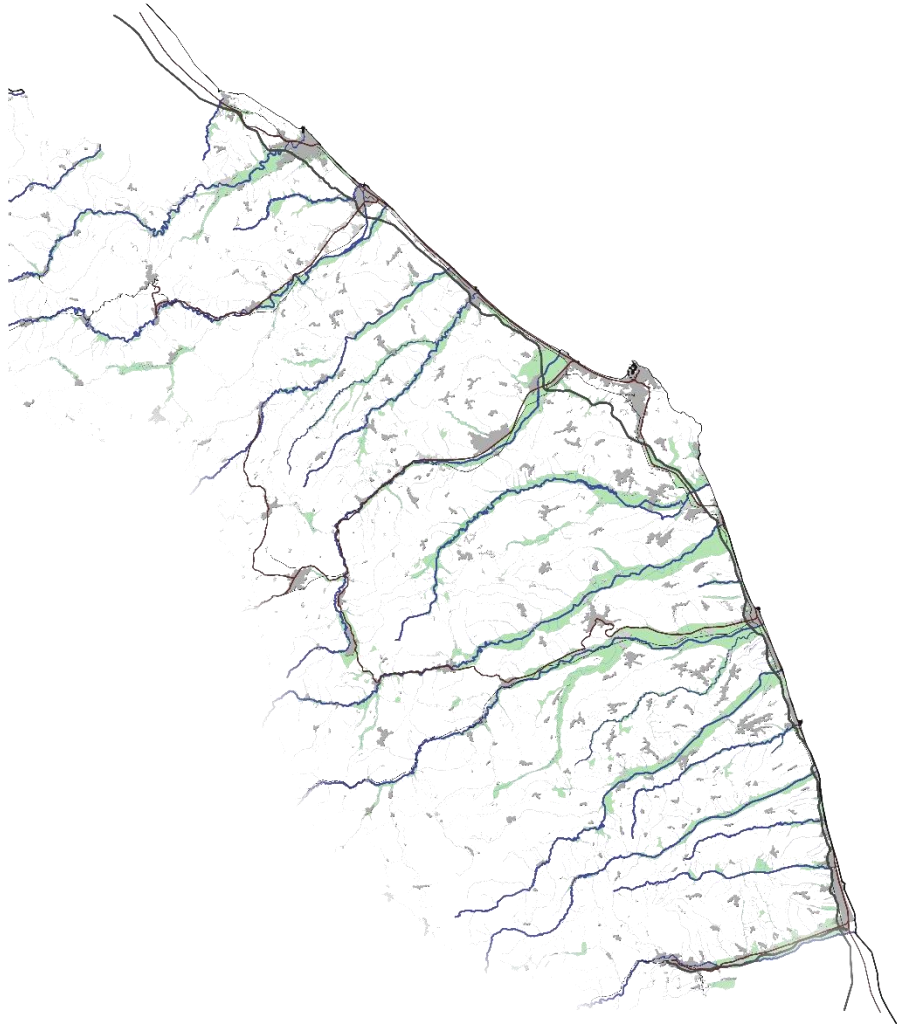
Massimo Sargolini, Ilenia Pierantoni
University of Camerino



The experiences we present today concern two different case studies:

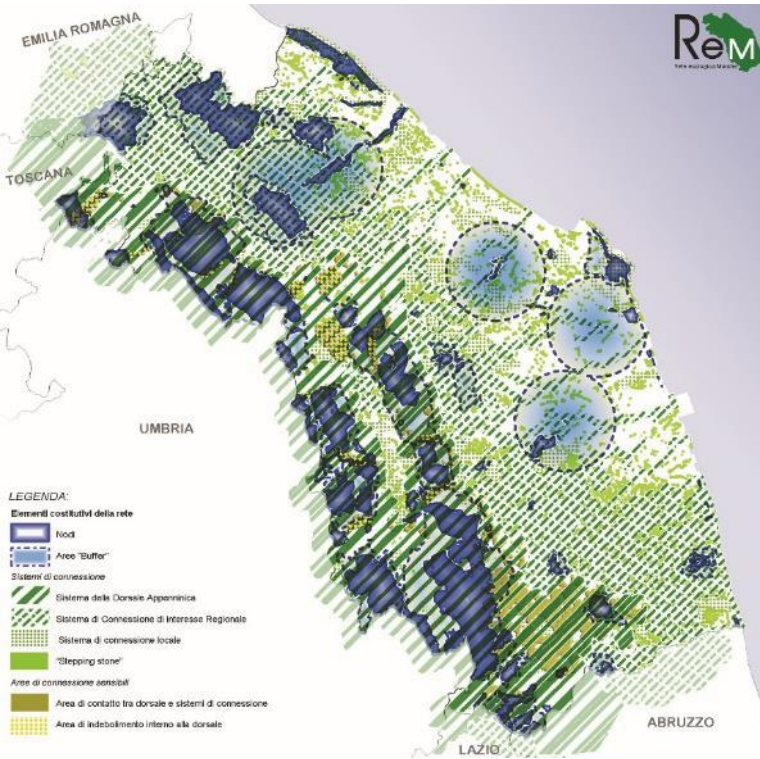
- the first regards the **Adriatic coast**. In this case, we investigated the interactions between the environmental networks that arise in the Apennine mountain range, move towards the coast through river valleys and get into the Adriatic city, creating living spaces and new urban shapes of the settlements. The experimentation of this case study is linked to the implementation of the Marche Regional Ecological Network;
- the second regards the **Umbria Region**, in the heart of the Apennine Mountains. In this case, we studied, in particular, the guiding role that protected areas and Natura 2000 network could play in guiding the regeneration of small towns and villages in the central Apennines, especially concerning the post-2016 earthquake reconstruction phase, with the aim to promote biodiversity conservation and improve quality of life of users.





The experience of Marche Regione Ecological Network









LEGENDA



Elementi costitutivi della rete

-  Nodi
-  Aree "Buffer"




Sistemi di connessione

-  Sistema della Dorsale Appenninica
-  Sistema di Connessione di Interesse Regionale
-  Sistema di connessione locale
-  "Stepping stone"




Aree di connessione sensibili

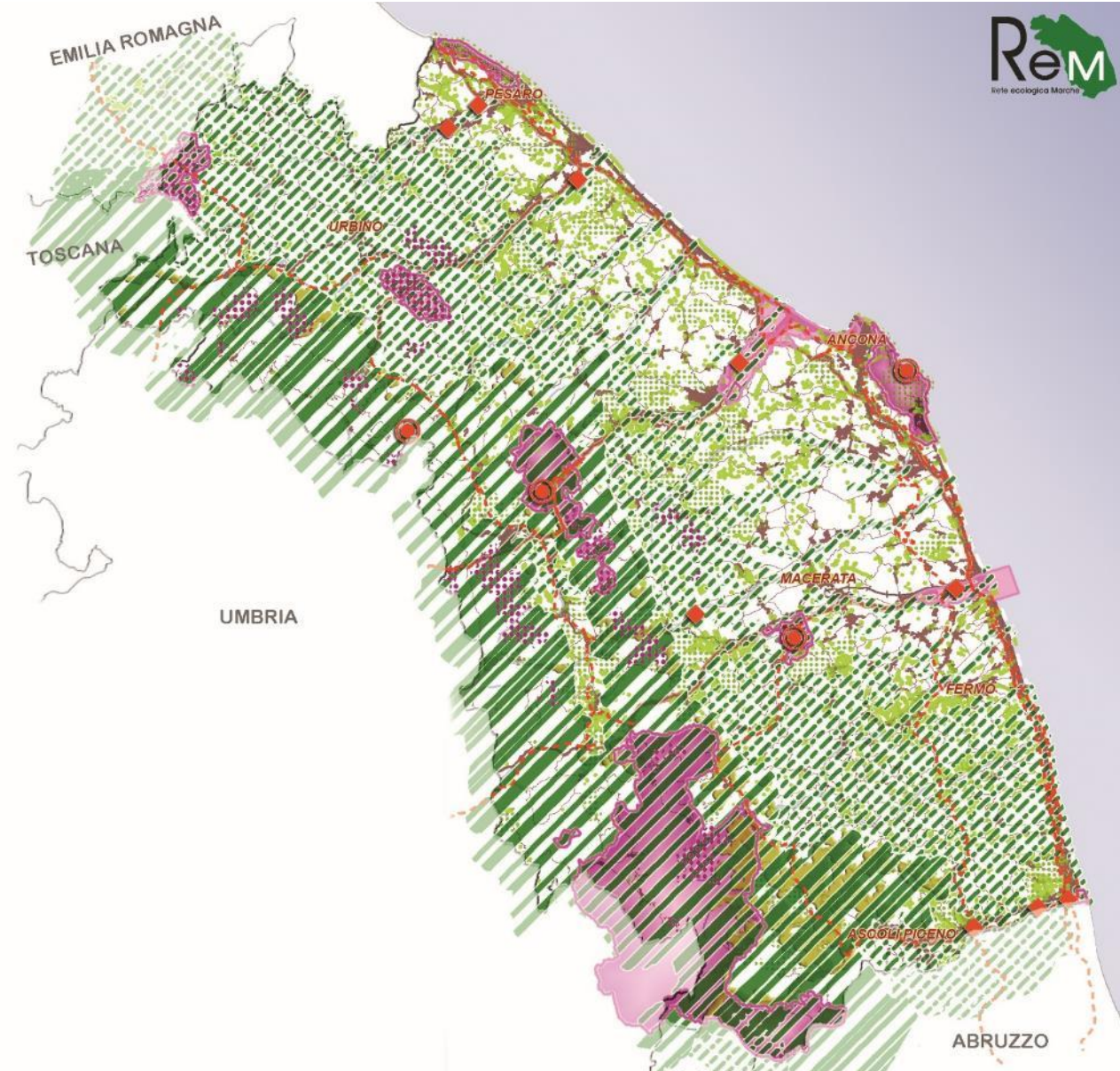
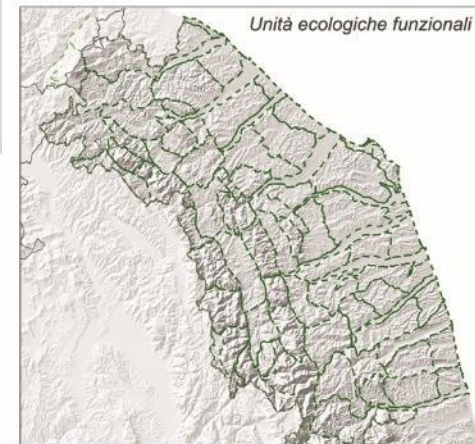
-  Area di contatto tra dorsale e sistemi di connessione
-  Area di indebolimento interno alla dorsale

Opportunità principali

-  Aree protette
-  Progetti ambientali speciali
-  IPLA foreste demaniali e demanio militare

Minacce principali

-  Aree ed elementi delle piattaforme logistiche
-  Grandi mete turistiche
-  Infrastrutture viarie di progetto di livello Interregionale e Regionale



LEGENDA

Matrice e mosaico di fondo

 Indice faunistico cenotico medio

 Unita' Ecologico Funzionali

Elementi costitutivi della rete

Nodi e aree "buffer"


 Nodi


 Aree "buffer"

Sistemi di connessione

 Sistema (di livello interregionale) della Dorsale Appenninica

 Sistema di connessione di interesse regionale

 Sistema di connessione locale


 "Stepping stone"


Aree di connessione sensibili

 Area di contatto tra Dorsale e Sistemi di connessione

 Area di indebolimento interno alla Dorsale

Opportunita' principali

 Aree protette (L.394/91)


 Progetti ambientali speciali


 Aree inedificate (Piano regionale difesa costa)

 IPLA foreste demaniali e demanio militare

Minacce principali

Elementi e previsioni delle piattaforme logistiche

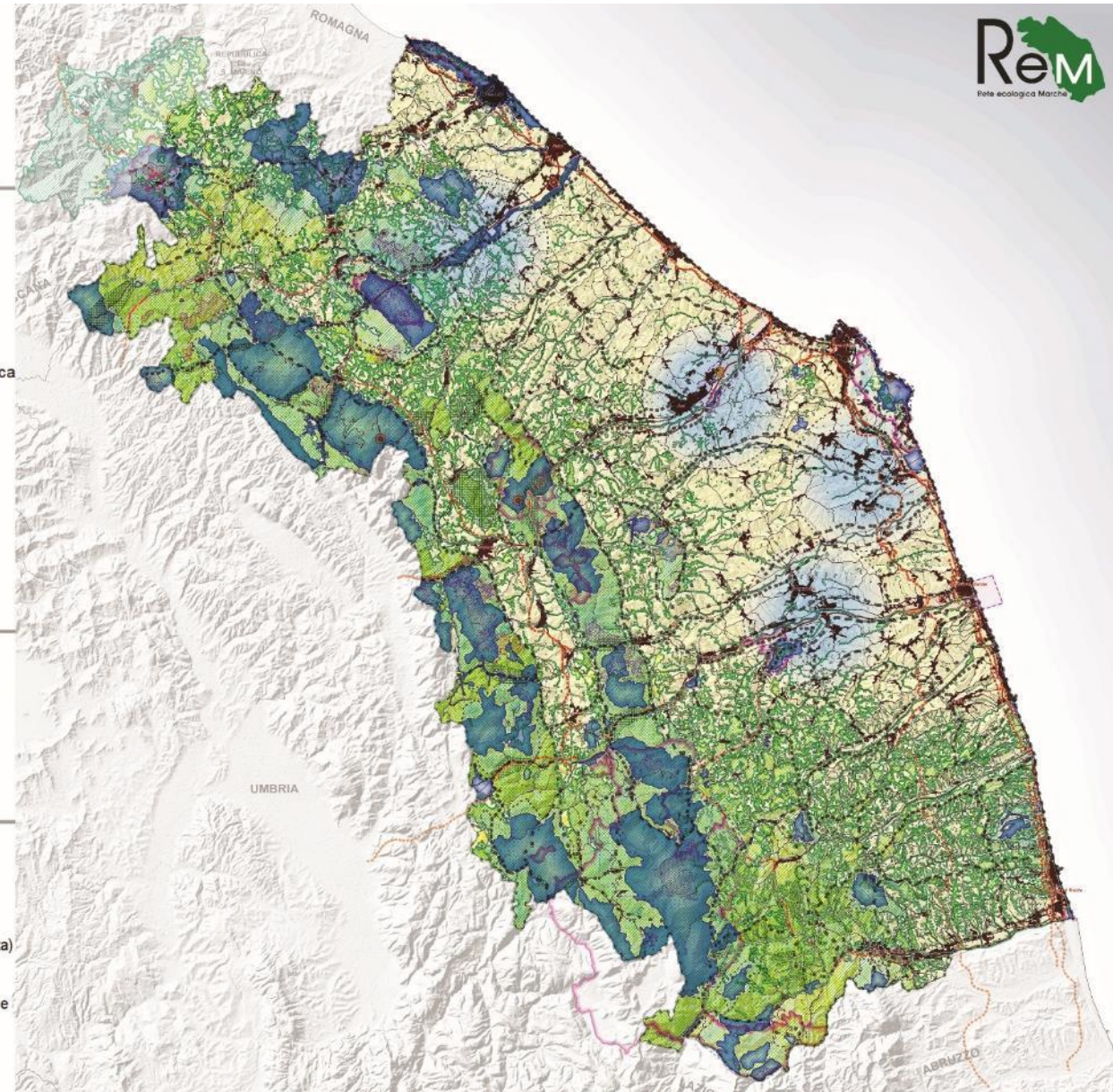
 Aree logistiche di importanza nazionale:
Area LEADER Quadrilatero e Interporto di Jesi

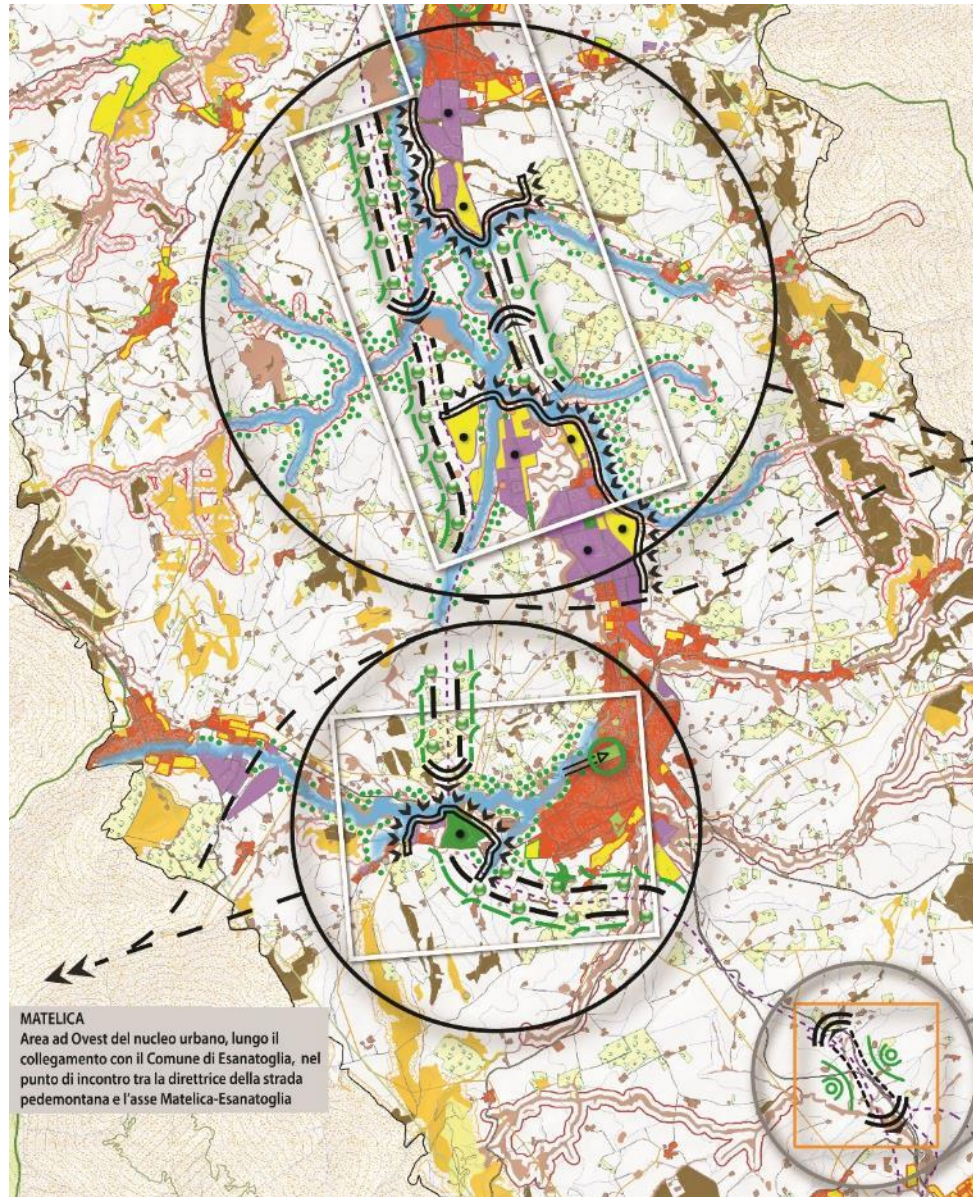
 Elementi delle piattaforme logistiche
(struttura interportuale; piattaforma logistica; area sosta attrezzata)

Infrastrutture e funzioni principali di probabile minaccia










 Infrastrutture viarie di progetto di livello Interregionale e Regionale

 Grandi mete turistiche





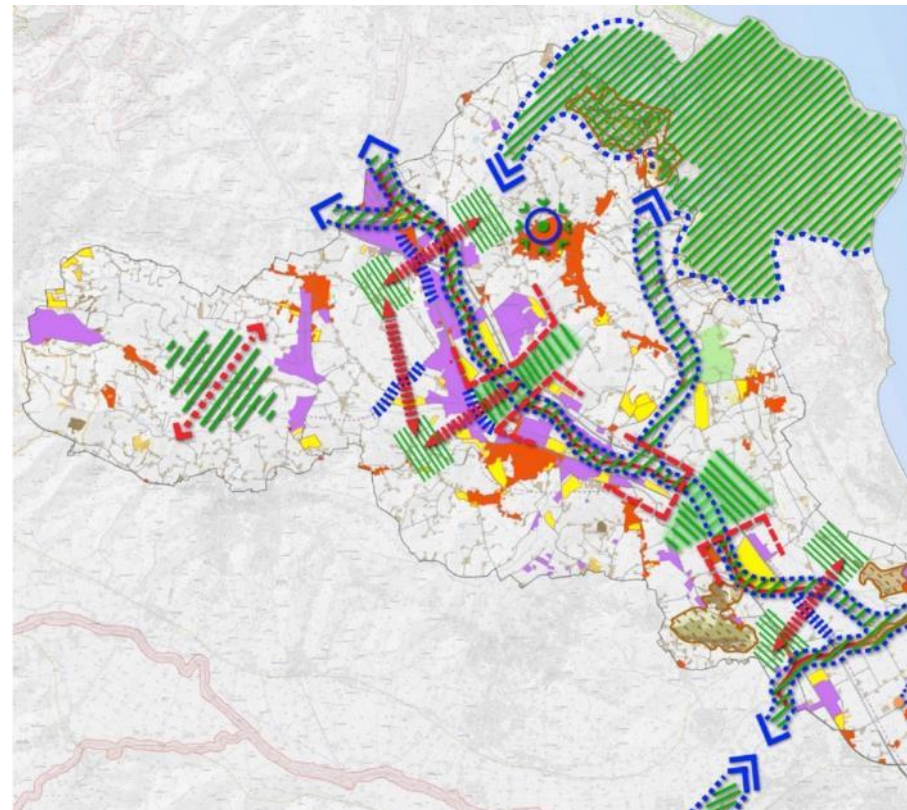
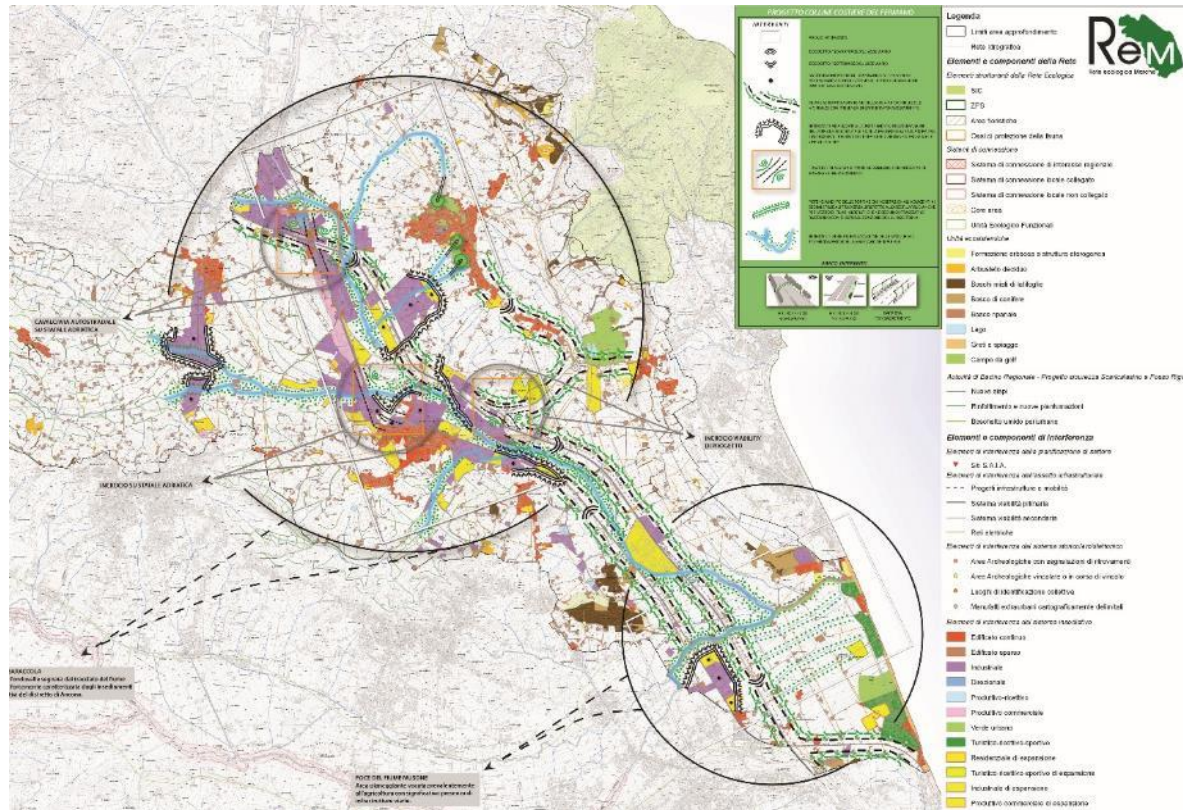
INTERVENTI

-  AREA D'INTERVENTO
-  ECODOTTO / SOVRAPPASSO SU ASSE VIARIO
-  ECODOTTO / SOTTOPASSO SU ASSE VIARIO
- SODDISFACIMENTO DEGLI STANDARD D.M. 1444/1968 E POTENZIAMENTO DEGLI STESSI NELLE AREE DI ESPANSIONE PRODUTTIVA E RESIDENZIALE
-  FILARE ALBERATO A MARGINE DELL'ASSE VIARIO O NELLE SUE VICINANZE CON PRESENZA DI BARRIERA FONOASSORBENTE
-  INTERVENTI FINALIZZATI AL CONTENIMENTO DELL'ESPANSIONE INDUSTRIALE/RESIDENZIALE E DELLA PROGRESSIVA SALDATURA TRA LIMITROFI POLI PRODUTTIVI (MATELICA E CERRETO D'ESI) E TRA AREE CONTIGUE O PROSSIME LE UNE ALLE ALTRE
-  INTERSEZIONE TRA ASSI VIARI D'ORDINE PRIMARIO CON PRESENZA DI ECODOTTI E BARRIERE FONOASSORBENTI
-  BARRIERA FONOASSORBENTE
-  ACCESSO ALLE SPONDE RIPARIALI DALL'AREA A VERDE ATTREZZATO INTERNA AL TESSUTO URBANO
-  INTERVENTI DI RINATURALIZZAZIONE DELLE SPONDE E DI POTENZIAMENTO DELLA VEGETAZIONE RIPARIALE



ABACO INTERVENTI

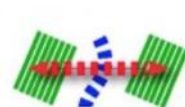




STRATEGIE

INTERVENTI DI POTENZIAMENTO DELLE CONNESSIONI CON GLI ELEMENTI STRUTTURANTI DELLA RETE ECOLOGICA

INTERVENTI VOLTI AD EVITARE LA PROGESSIVA SALDATURA DELLE SINGOLE AREE DEI POLI PRODUTTIVI AI FINI DEL MANTENIMENTO DELLE CARATTERISTICHE PROPRIE DEGLI SPAZI RESIDUALI TRA ESSE FRAIPPSTI



INTERVENTI DI MITIGAZIONE DEGLI IMPATTI DELLA RETE INFRASTRUTTURALE (RAFFORZAMENTO DEGLI ATTRAVERSAMENTI NEI PUNTI DI INTERSEZIONE TRA FORMAZIONI VEGETAZIONALI ED ASSI VIARI)



RAFFORZAMENTO DEI COLLEGAMENTI TRA LE FORMAZIONI VEGETAZIONALI BOSCHIVE E GLI ELEMENTI LINEARI DEL PAESAGGIO AGRARIO



INTERVENTI DI RAFFORZAMENTO DELLE FORMAZIONI VEGETAZIONALI INTERNE AL TESSUTO URBANO AL FINE DI CONSOLIDARE IL SISTEMA DI CONNESSIONE INTERNO

INTERVENTI DI TUTELA DELLE FORMAZIONI VEGETAZIONALI DELLE FASCE RIPARIALI CONTIGUE ALLE AREE DI ESPANSIONE PRODUTTIVE E RESIDENZIALI CON SODDISFACIMENTO DEGLI STANDARD



INTERVENTI DI RAFFORZAMENTO DEGLI ELEMENTI STRUTTURANTI DELLA RETE ATTRAVERSO LA VALORIZZAZIONE DELLA VEGETAZIONE RIPARIALE DEGRADATA E DELLE FORMAZIONI VEGETAZIONALI DI RILIEVO



RETE DI SITI A VALENZA ARCHEOLOGICA RICONOSCIUTA LA CUI GESTIONE STRATEGICA GARANTISCA IL MANTENIMENTO DELLE QUALITA' AMBIENTALI DEL CONTESTO CIRCOSTANTE



Attualità della Rete ecologica Marche nel sito
"Città e Costiere del Femano"

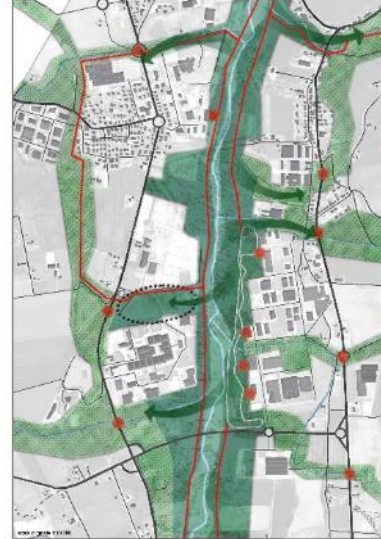
ReM
Rete ecologica Marche

Area di approfondimento 4
Comune di Montegiugano
Zona industriale Ete Mare

Obiettivi progettuali
Inserire il verde in tutti i punti di contatto tra gli spazi urbani e quelli naturali, creando una rete ecologica che favorisca la mobilità e la fruizione del territorio, migliorando la qualità dell'aria e il benessere dei cittadini.

Aspetti
- Integrazione del verde nelle infrastrutture urbane
- Miglioramento della qualità dell'aria e del benessere dei cittadini
- Protezione delle risorse naturali
- Promozione della mobilità sostenibile

Prodotto da: **terro** | Dicembre 2017



Attualità della Rete ecologica Marche nel sito
"Città e Costiere del Femano"

ReM
Rete ecologica Marche

Area di approfondimento 3
Insediamenti produttivi
La Gioia - Compagnara

Obiettivi progettuali
Lavorare al potenziamento del verde esistente e alla creazione di nuove aree verdi, migliorando la qualità dell'aria e il benessere dei cittadini, e favorendo la mobilità sostenibile.

Aspetti
- Integrazione del verde nelle infrastrutture urbane
- Miglioramento della qualità dell'aria e del benessere dei cittadini
- Protezione delle risorse naturali
- Promozione della mobilità sostenibile

Prodotto da: **terro** | Dicembre 2017



Attualità della Rete ecologica Marche nel sito
"Città e Costiere del Femano"

ReM
Rete ecologica Marche

Area di approfondimento 1
Comune di Sant'Elpidio a Mare
Caselle d'Elle

Obiettivi progettuali
Inserire il verde in tutti i punti di contatto tra gli spazi urbani e quelli naturali, creando una rete ecologica che favorisca la mobilità e la fruizione del territorio, migliorando la qualità dell'aria e il benessere dei cittadini.

Aspetti
- Integrazione del verde nelle infrastrutture urbane
- Miglioramento della qualità dell'aria e del benessere dei cittadini
- Protezione delle risorse naturali
- Promozione della mobilità sostenibile

Prodotto da: **terro** | Dicembre 2017



Attualità della Rete ecologica Marche nel sito
"Città e Costiere del Femano"

ReM
Rete ecologica Marche

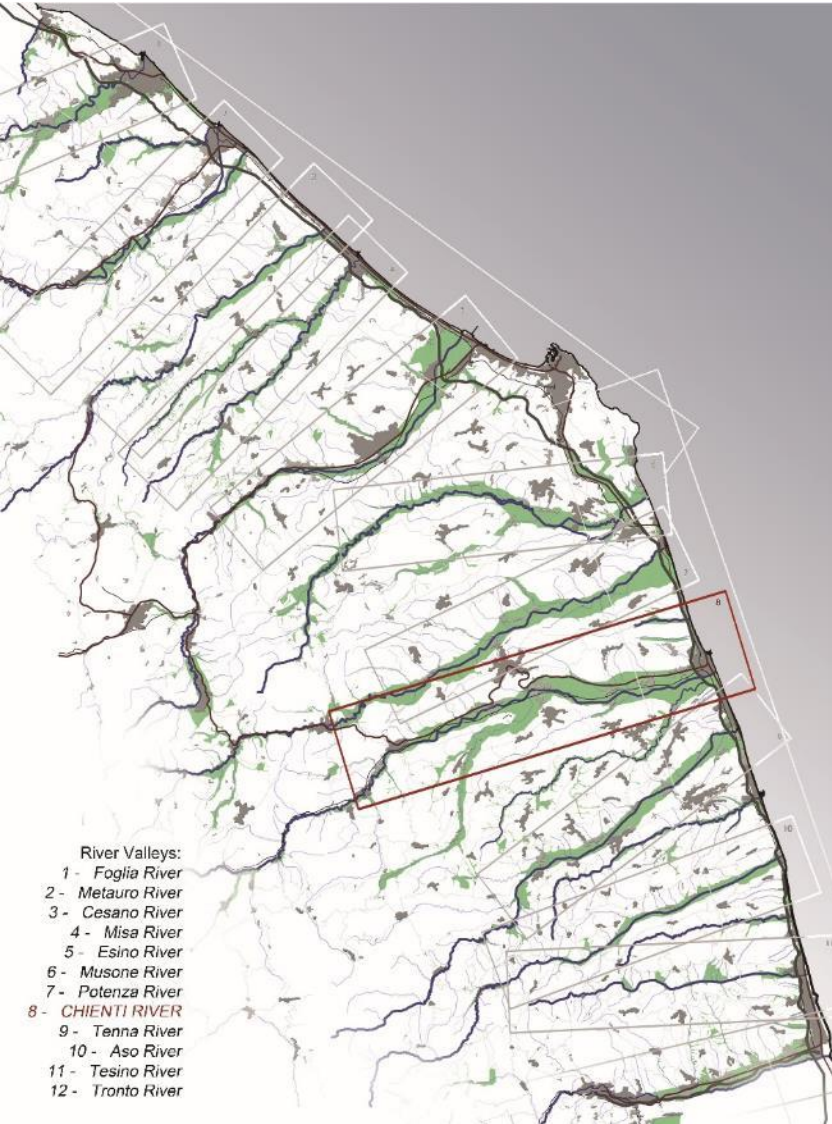
Area di approfondimento 2
Comune di Monte Urato
Centro storico

Obiettivi progettuali
Lavorare al potenziamento del verde esistente e alla creazione di nuove aree verdi, migliorando la qualità dell'aria e il benessere dei cittadini, e favorendo la mobilità sostenibile.

Aspetti
- Integrazione del verde nelle infrastrutture urbane
- Miglioramento della qualità dell'aria e del benessere dei cittadini
- Protezione delle risorse naturali
- Promozione della mobilità sostenibile

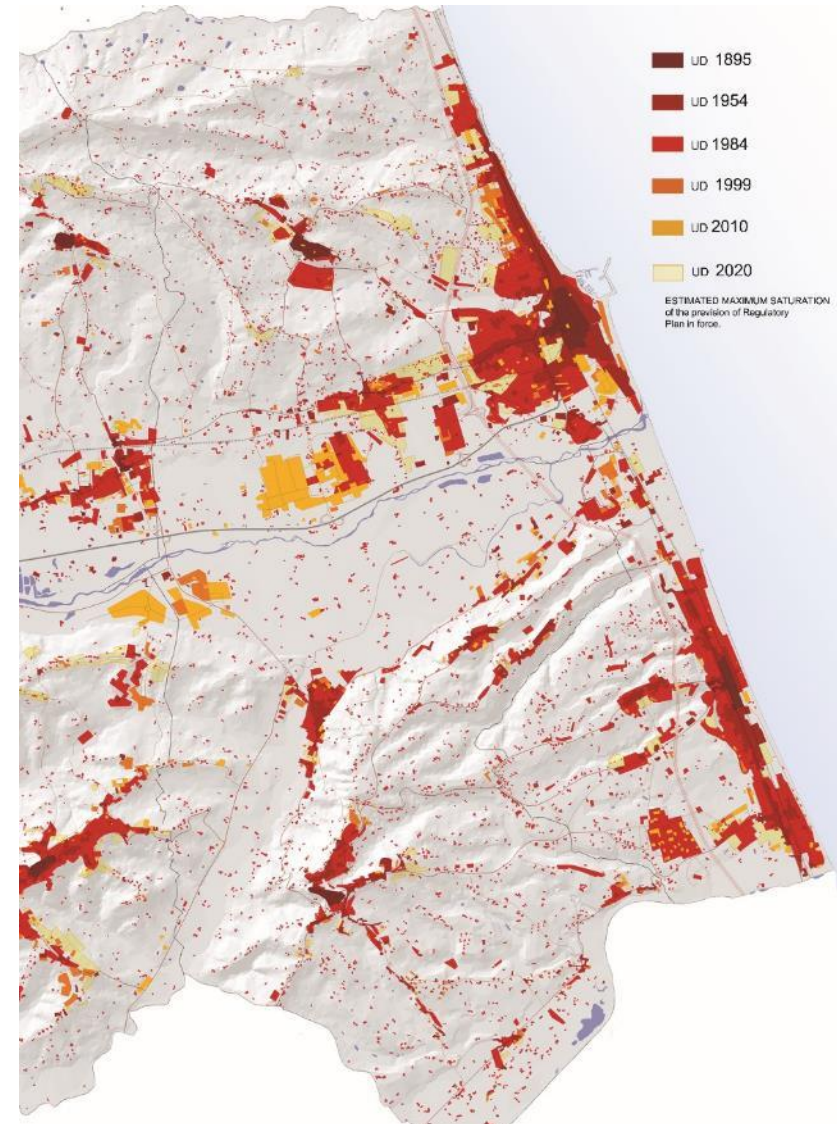
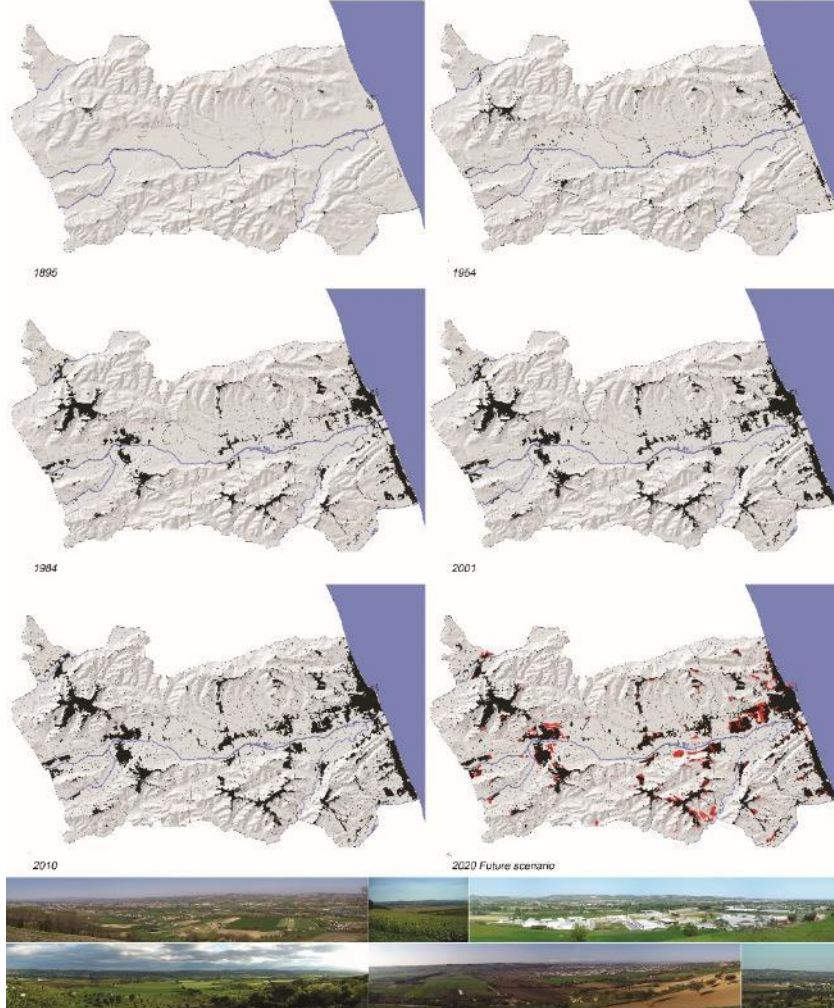
Prodotto da: **terro** | Dicembre 2017





Case study: Lower Chienti River Valley
 population: 180337
 municipalities: CIVITANOVA MARCHE, CORRIDONIA, MACERATA, MONTE SAN GIUSTO, MONTECOSARO, MONTEGRANARO, MORROVALLE, PETRIOLO, PORTO SANTELPIDIO, SANTELPIDIO A MARE

total surface: 39935,24 ha
 density of population: 452 ab/Kmq



Adriatic city and diffusion along the coastal infrastructures



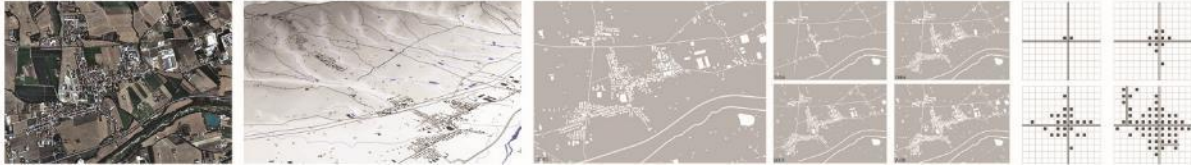
Compact city and the interstices



Historic centers and urban filaments



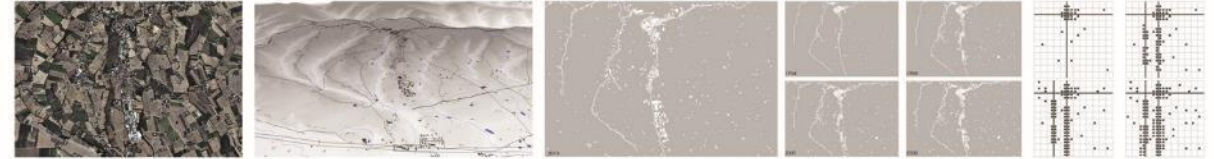
Urban sprawl of important road axes



Industrial and commercial areas in the open agricultural territory



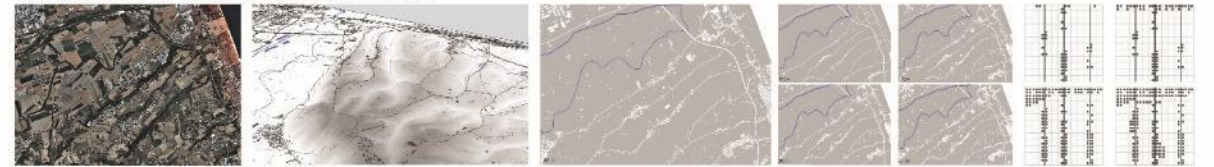
Urban sprawl along secondary roads



Hills centre rolling down to the valley



Diffusion of small towns along the minor ridges



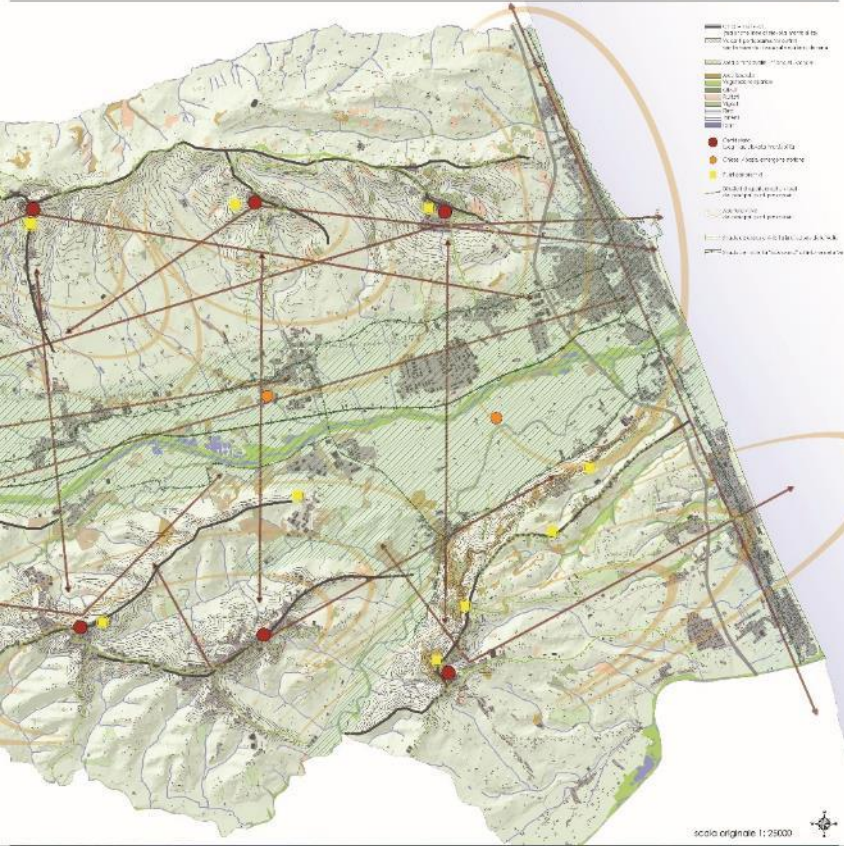
framework

shape of the city

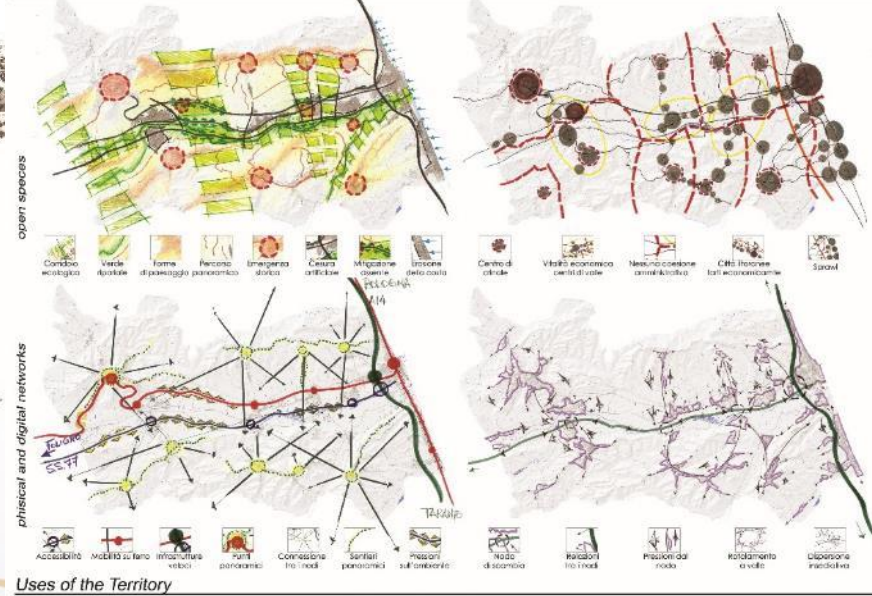
full and empty spaces

dynamics of urban development

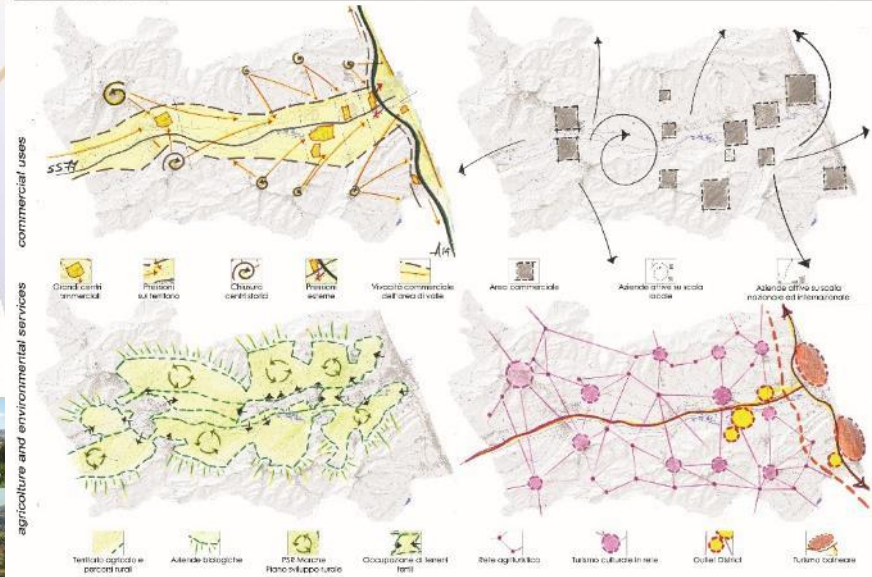
urban development schemes



Signs of the Territory



Uses of the Territory

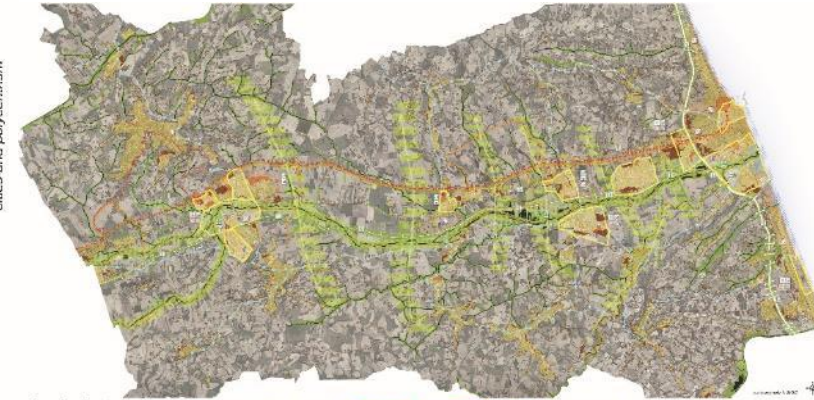


cities and polycentrism

nodes

industrial uses

public services and tourism



Planning Strategies

Measure of Environmental Integration



Measure of environmental compensation



Parks and green public spaces



Environmental Networks



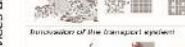
Institution of ecological zoning



Urban equalization



Demolition and reconstruction



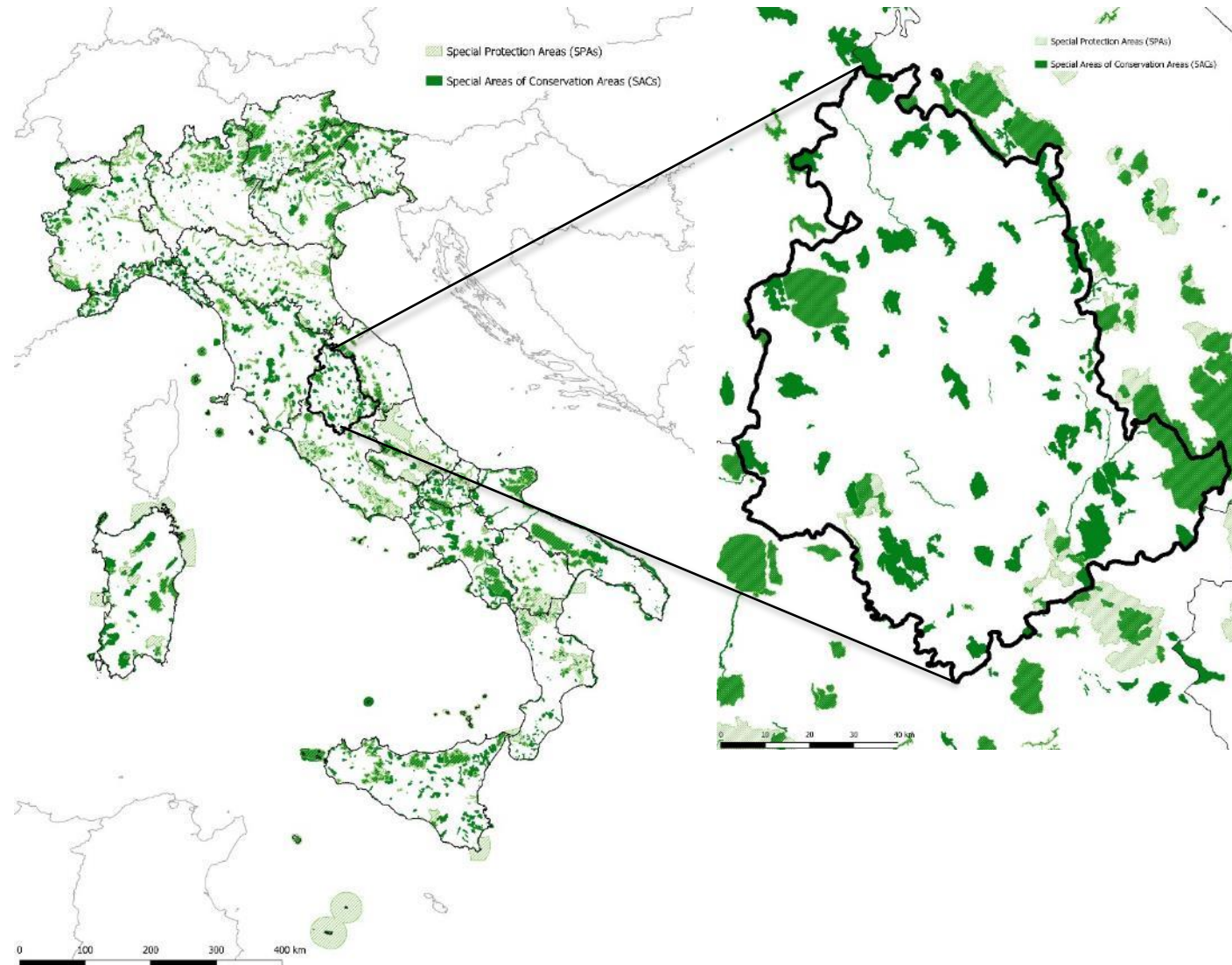
Functional Areas



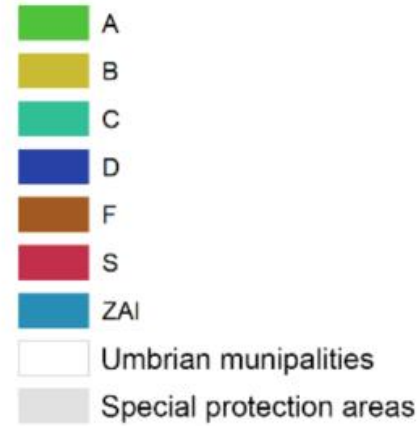
The regional network is made up of 102 sites (5 SPAs and 97 SACs), accounting for about **16% of the regional territory**, for a total area of around 140,000 hectares.

The Natura 2000 sites hosts **41 habitat of community interest**, including 11 priority, 143 animal species (4 priority) and **8 plant species**.

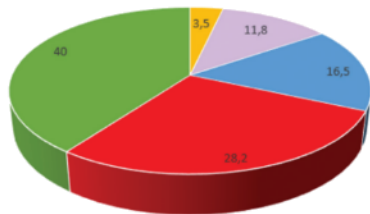
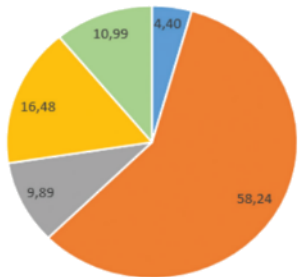
Umbria has also identified a framework for a **Regional Ecological Network (RERU)**, of which the Natura 2000 sites are an integral part, in order to ensure the ecological connection among the most important areas for biodiversity within the Region.



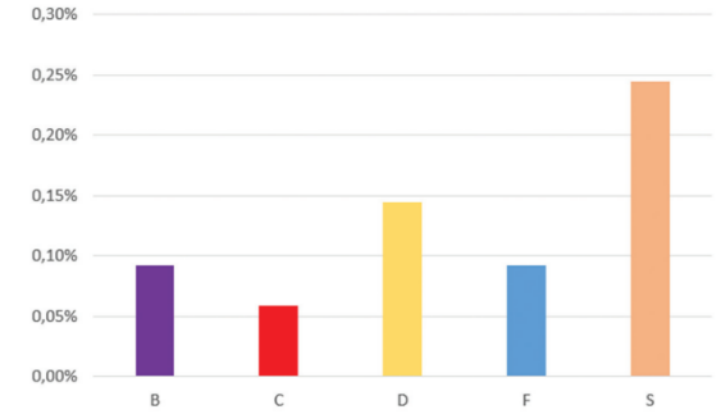
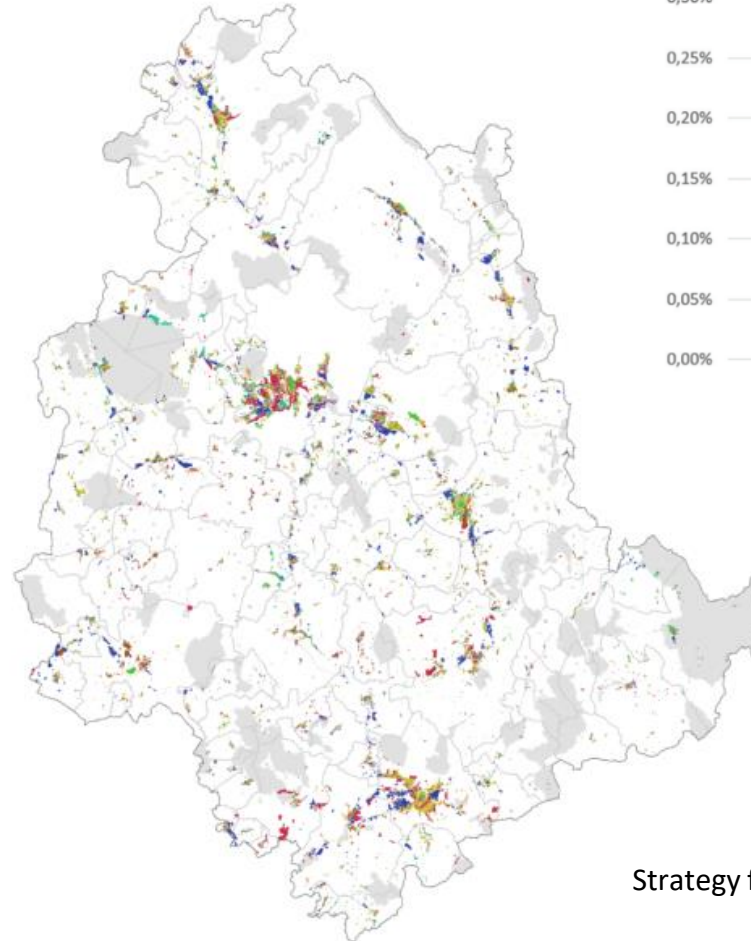
GRPs mosaic
of Umbrian municipalities



- PRG
- PRG OPERATIVO
- PRG STRUTTURALE
- PROGRAMMA DI FABBRICAZIONE
- PRG INTERCOMUNALE



1974-1978 1994-1999 2000-2004 2005-2008 2009-2014



SUN LIFE

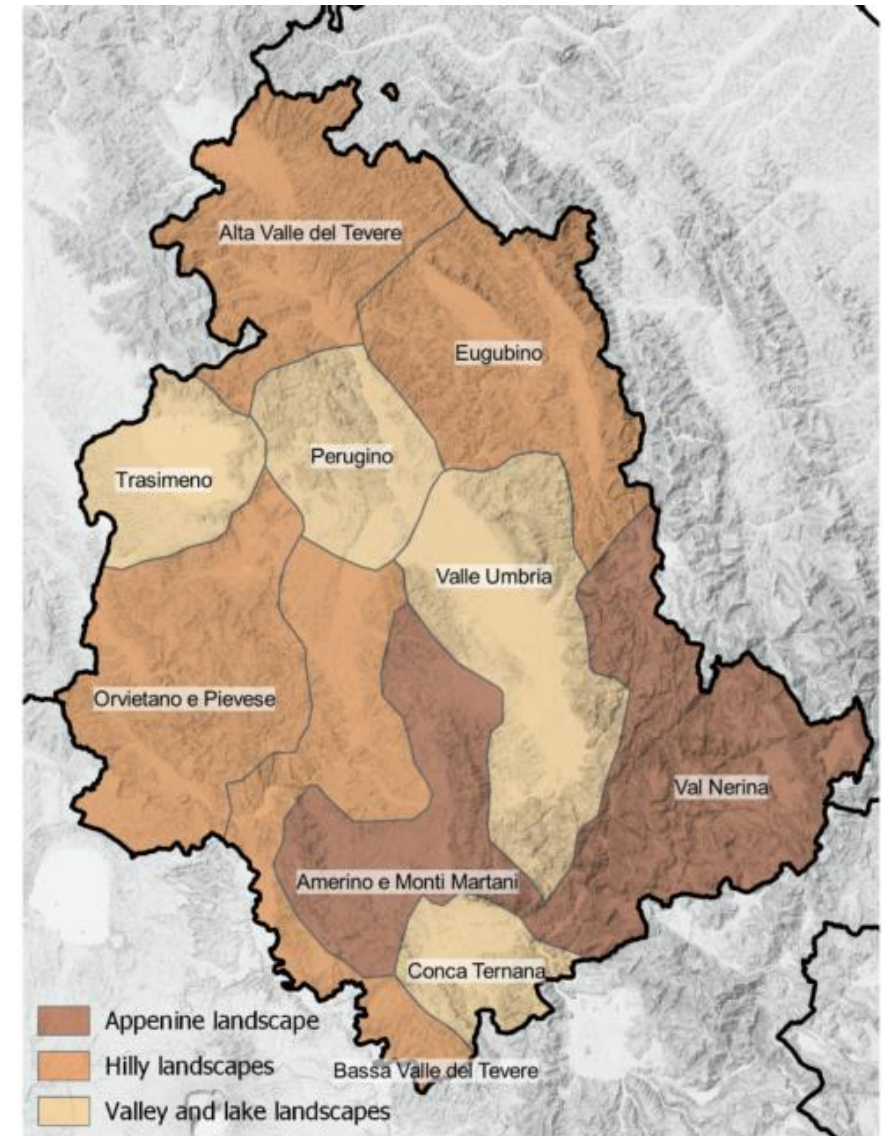
Strategy for the Natura 2000 Network of the Umbria Region”
(LIFE13 NAT/IT/000371)

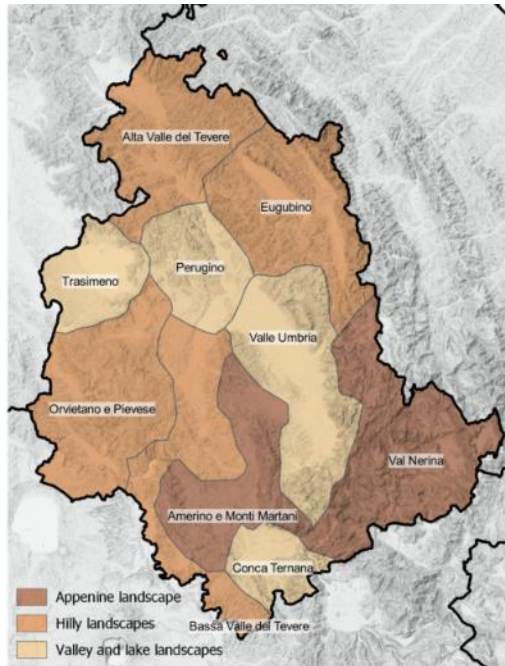
Left - above, the percentage of types of GRP currently present in Umbria. Left - below, the percentage of plans in operation when they were drafted. (UNIVAQ)
Centre - The complete mosaic of the general regulatory plans deriving from the ADP and SUN LIFE projects. (UNIVAQ)
Right - Percentage distribution (y-axis) of GRP provisions (x-axis) in the regional system of Natura 2000 Network sites. (UNIVAQ)

The LIFE SUN Research Project objective was to act through the landscape and identify those essential actions with landscape importance to maintain and increase biodiversity and, therefore, the quality of life.

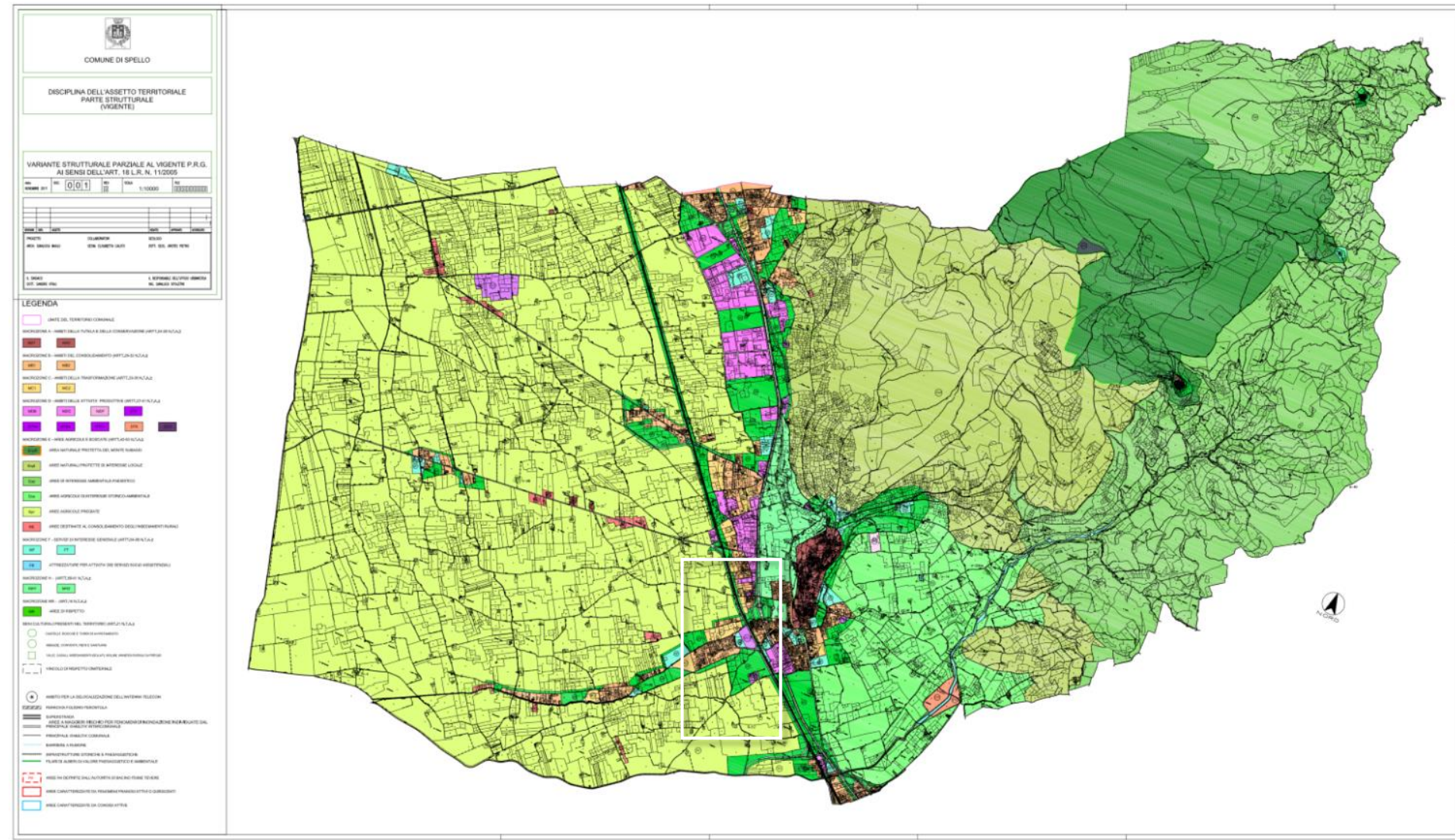
The strategic line was organized by dividing Umbria into landscape areas based on the **functional grouping of “Regional Landscapes”** defined by the RLP. The landscape areas were defined using their dominant characteristics, which can be traced to three main types: the historical/cultural, physical/natural, and social/symbolic matrices.

The landscape areas were then characterized through proposed objectives that aim to conserve the landscape through some protection activities, as in the case of human practices (agriculture, forestry, shepherding) that can significantly influence the levels of biodiversity in the territory. Objectives were then proposed that foresee different management practices (incentives for shepherding, production-chain agreements, and agricultural/environmental agreements) for the components that characterize the quality landscape in Umbria in order to strengthen the values in play.



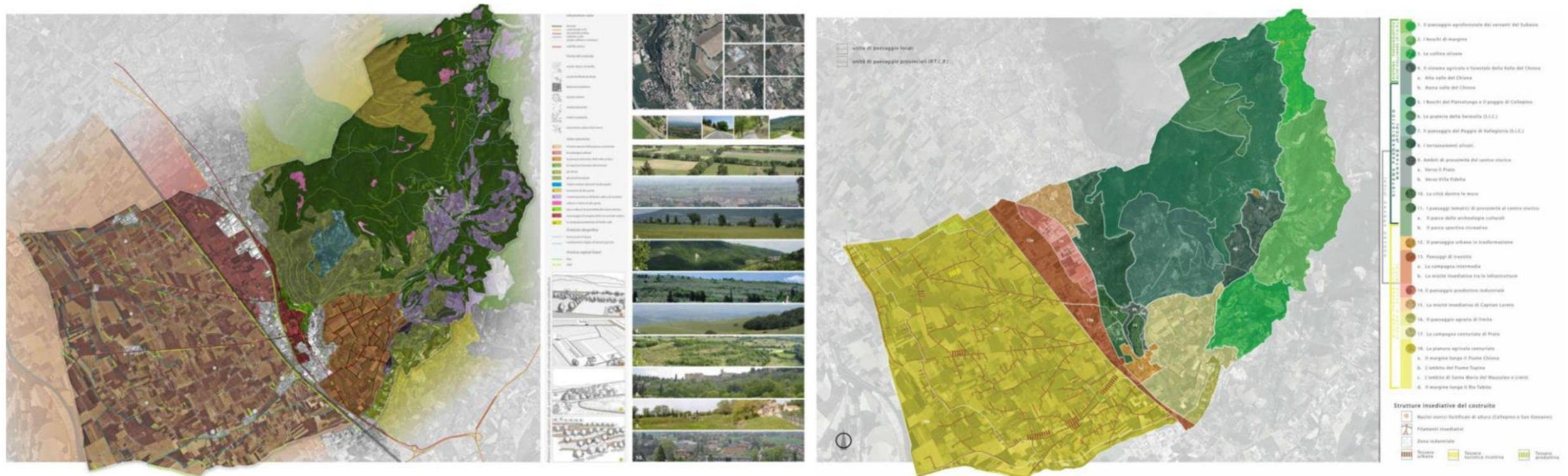


		Landscapes in Umbria										
		Apennine landscapes		Hilly landscapes				Valley and lake landscapes				
Id	Strategic actions	Apennine landscape with physical/natural characteristics and historical/cultural elements spread throughout the Valnerina	Apennine landscape with physical/natural characteristics in the Martani and Amerino Mountains	Apennine landscape with physical/natural characteristics in the Martani and Amerino Mountains	High hill landscape of Gubbio with historical/cultural characteristics	Hilly landscape of Orvieto with historical/cultural characteristics	Hilly landscape with physical/natural characteristics in the low Tiber Valley	Lake landscape of Lake Trasimeno with physical/natural characteristics	Valley landscape of Perugia with social/symbolic characteristics	Valley landscape of the Umbra Valley with social/symbolic characteristics	Valley landscape of Conca Ternana with social/symbolic characteristics	
A. NATURAL SYSTEM	1	Regeneration of forest landscapes, favouring structural diversity	✓	✓	✓		✓			✓		✓
	2	Managing the renaturalization of mountain meadows	✓	✓							✓	
	3	Protection of wet environments and waterways	✓					✓	✓			✓
	4	Reinforcing bands of natural vegetation along rivers and in plains			✓		✓	✓				✓
B. RURAL SYSTEM	1	Protection of traditional agrarian landscapes characterized by a mosaic of forests and cultivation		✓		✓	✓	✓	✓		✓	✓
	2	Protection of residual cultivated mountain landscapes	✓									
	3	Regeneration of rural valley landscapes			✓			✓	✓		✓	
	4	Maintenance and restructuring of portions of rural territory where high-quality farming persists and/or specialized production chains arise, in order to counteract the abandonment of cultivated areas			✓						✓	✓
C. SETTLEMENT SYSTEM	1	Protection of residual areas with high biological value by regenerating degraded contexts and adjacent areas								✓		✓
	2	Enhancing the relationship between historical towns and the natural/rural context	✓	✓				✓	✓	✓	✓	✓
	3	Regeneration of the urban-rural continuum in peri-urban areas			✓	✓				✓	✓	✓
	4	Urban regeneration through interventions to renaturalize and penetrate the natural structure in settled areas								✓	✓	✓



The experience of Spello:
Masterplan for the valorization of peri-urban landscapes: redesign urban areas to increase the production of ecosystem services and improve the quality of life

Masterplan for the valorization of peri-urban landscapes: redesign urban areas to increase the production of ecosystem services and improve the quality of life









The experience of Spello:
Masterplan for the valorization of peri-urban landscapes: redesign urban areas to increase the production of ecosystem services and improve the quality of life



Case study #2: experiences in the context of the Umbria Region

LEGENDA: INTERVENTI

-  Infrastrutture verdi, filari, boschi, rinaturalizzazione, parco agricolo, mitigazione, rete ecologica
-  Fruibilità, qualità, percorsi e spazi di relazione, funzione sociale, accessibilità
-  Recupero e valorizzazione del patrimonio edilizio
-  Arredo Urbano
-  Attività ludico-ricreative
-  Creazione di nuovi paesaggi e riqualificazione di paesaggi rurali

LEGENDA: AZIONI PROGETTUALI INTEGRATE:

- 1** Valorizzare le aree rurali e gli spazi aperti con incremento della naturalità anche in relazione alla loro fruibilità e alla qualità del paesaggio;
- 2** Potenziare le infrastrutture verdi del territorio anche in coerenza con la rete ecologica regionale;
- 3** Riqualificare e rigenerare i paesaggi rurali e delle periferie, degli spazi aperti e dell'edificato, delle frange urbane, delle aree dell'urbanizzazione diffusa del periurbano al fine di migliorare la qualità ambientale, paesaggistica ed architettonica di tali contesti;
- 4** Riqualificare e rigenerare da un punto di vista ecologico fruttivo i paesaggi rurali fluviali o lacuali;
- 5** Riqualificare e/o mitigare i paesaggi rurali lungo le arterie infrastrutturali di prossimità a centri urbani e a borghi;
- 6** Riqualificare gli spazi aperti e i paesaggi rurali degradati anche attraverso progetti di costruzione di nuovi paesaggi;
- 7** Recuperare assetti paesaggistici tradizionali specialmente per ciò che riguarda l'ordinamento spaziale degli usi del suolo;
- 8** Restaurare o creare elementi del paesaggio di importanza ecologica (filari, siepi arboree e arbustive, sistemi agroforestali lineari, fasce tampone boscate, boschetti, alberi isolati etc...);
- 9** Mantenere e reinserire elementi arborei o arbustivi, lungo il bordo dei campi, nei pascoli e nelle pertinenze dei fabbricati rurali;
- 10** Rinaturalizzare i corsi d'acqua compresi i reticoli idrografici minori (canali, fossi etc...);
- 11** Valorizzare il patrimonio insediativo ed antropico rurale attraverso il recupero di complessi, edifici ed elementi architettonici di pregio
- 12** Riqualificare e valorizzare edifici dell'edilizia recente ed aree inutilizzate attraverso interventi di recupero, riuso e re-cycle.



COMUNE DI SPELLO

NATURE URBANE
Aree verdi per la riqualificazione
e valorizzazione del paesaggio

MASTERPLAN DI PROGETTO



LIFE19 IPE/IT/000015
Nature 2000 Integrated
Management in Umbria

LIFE IMAGINE UMBRIA

Nature 2000 Integrated Management in Umbria
(LIFE19 IPE/IT/000015)

The LIFE IMAGINE Research Project is a follow-up of the LIFE SUN Research Project, whose general aim is the creation of an integrated management system that guarantees the achievement of the conservation objectives of the Habitats and Birds Directives, also in terms of economic and technical sustainability (to improve quality of life of local communities), through the development of management policies and actions towards:

- i) the pro-active management of habitats and species,
- ii) the coherence between the Natura 2000 Network and external territories (ecological connectivity and landscape),
- iii) the training of professionals suitable for the management of Natura 2000 Network, iv) the involvement of citizens.



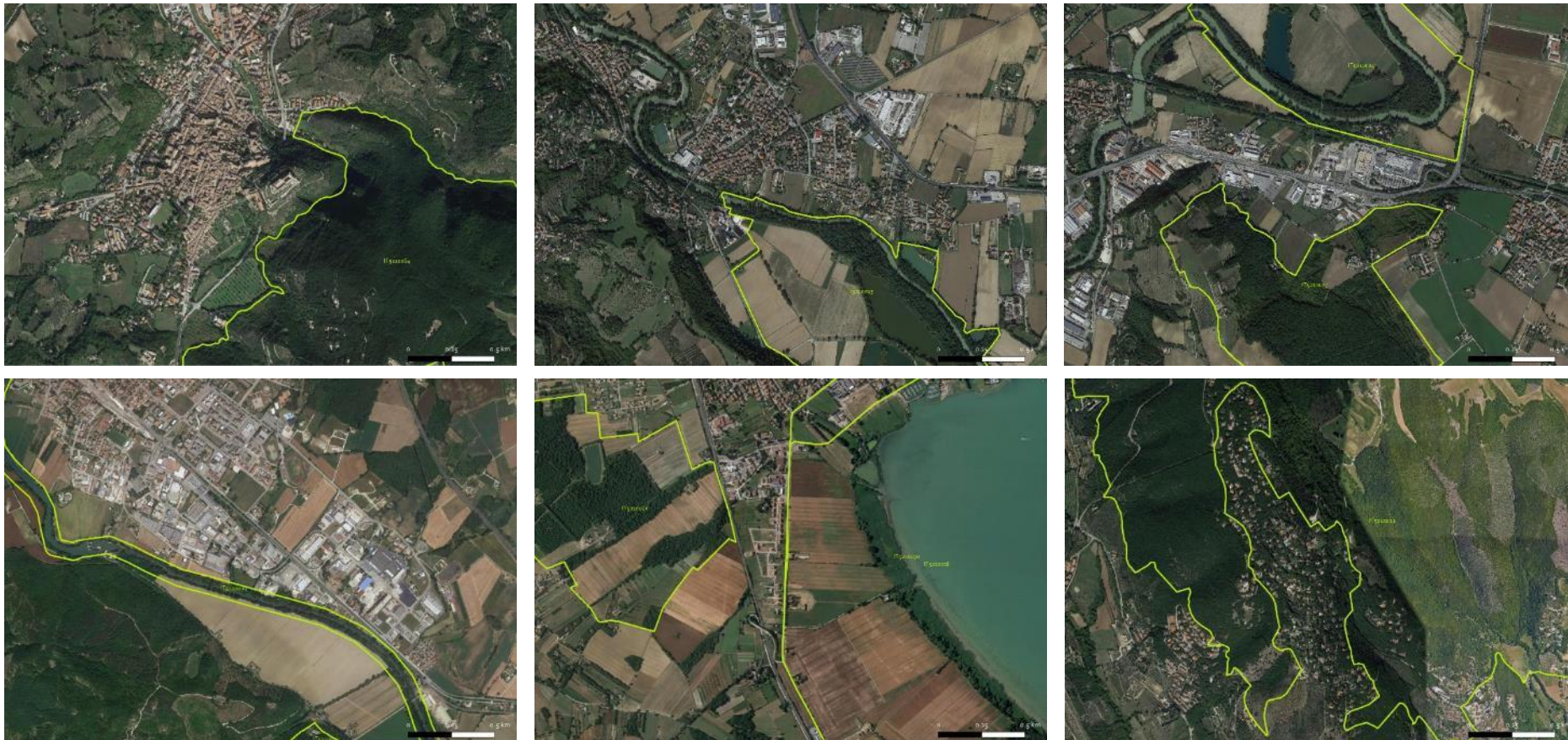
LIFE19 IPE/IT/000015
Nature 2000 Integrated
Management in Umbria

LIFE IMAGINE UMBRIA

Nature 2000 Integrated Management in Umbria
(LIFE19 IPE/IT/000015)

- Analysis and characterization of regional urban and peri-urban areas in order to identify their possible role in the conservation of habitats and species of Community interest
- Updating of the regional repertoire of territorial and sectoral planning tools at supralocal and local scale that may interfere (negatively or positively) with N2K Network
- Producing innovative governance models for the management of the N2K Network in Umbria:
 - *Crater Community*
 - *Landscape Agreement for biodiversity*

- Analysis and characterization of regional urban and peri-urban areas in relation with landscapes



- Crater Community



photo credits: www.festivalitaca.net

- Landscape agreement for biodiversity

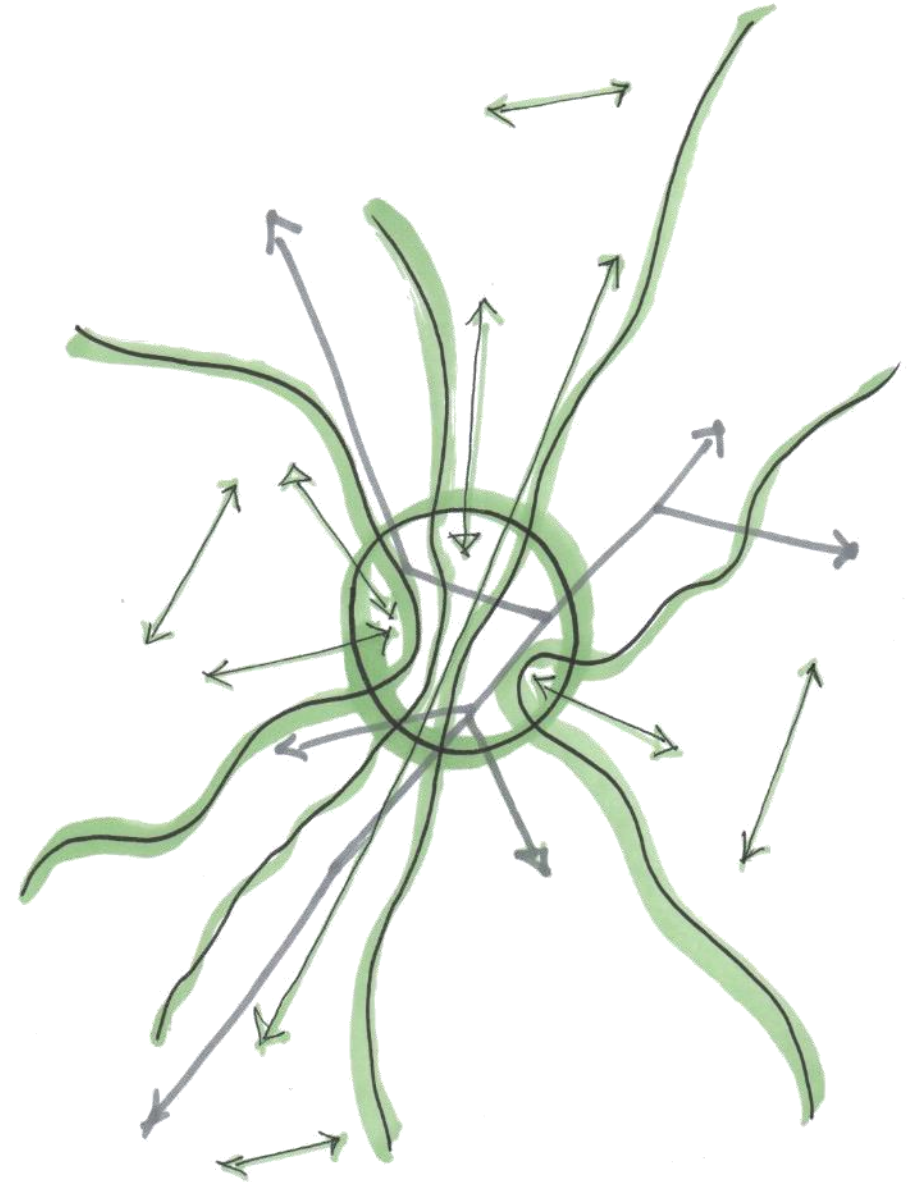


Take home message

The relationship between urban areas and protected areas is particularly relevant in Italy and Europe, also in consideration of the proximity and physical interactions between these two geographical contexts.

The study of this relationship becomes essential to:

- define guidelines to redesign urban and peri-urban areas;
- design green corridors and permeabilities into dense settlements;
- coordinate actions for the conservation of biodiversity and actions for the development of new urban landscapes, in the light of sustainability transition;
- rediscover the role of protected areas and green environmental networks in increasing the quality of life in urban contexts.





Merci
Thank you
Grazie mille

